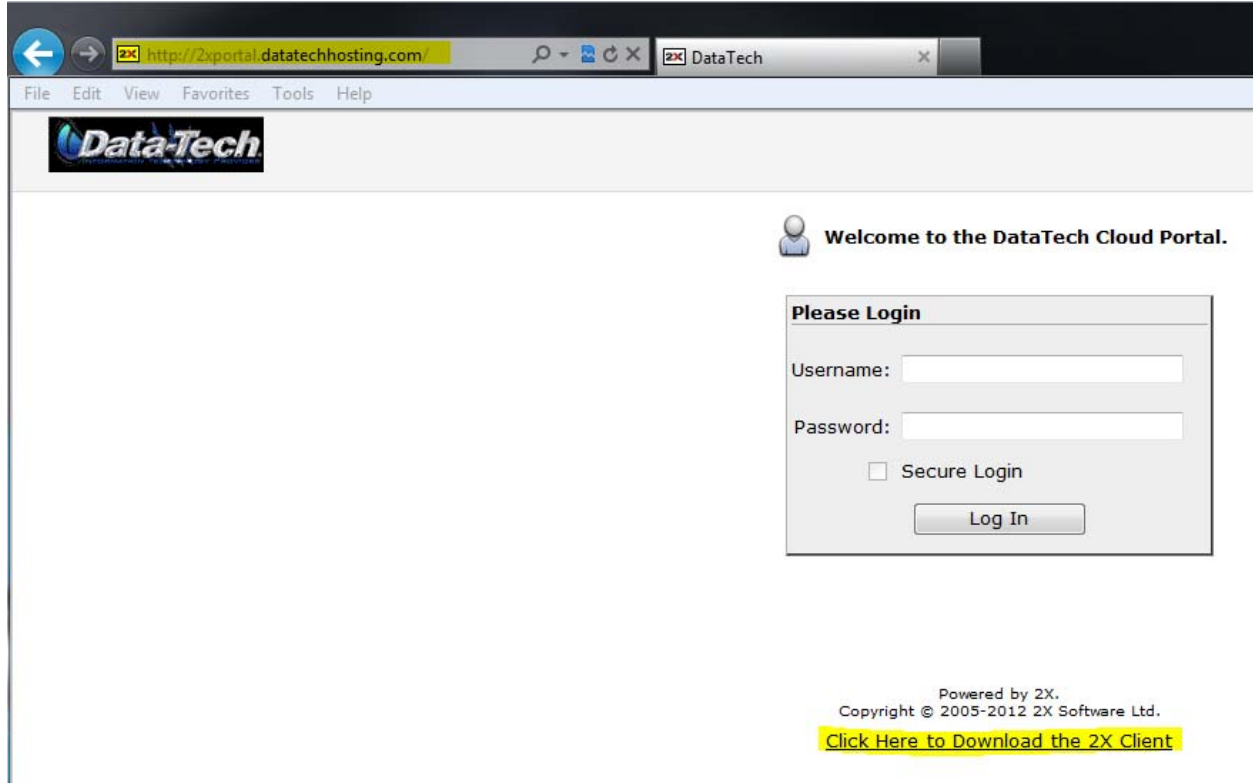


2X Cloud Hosting Guide

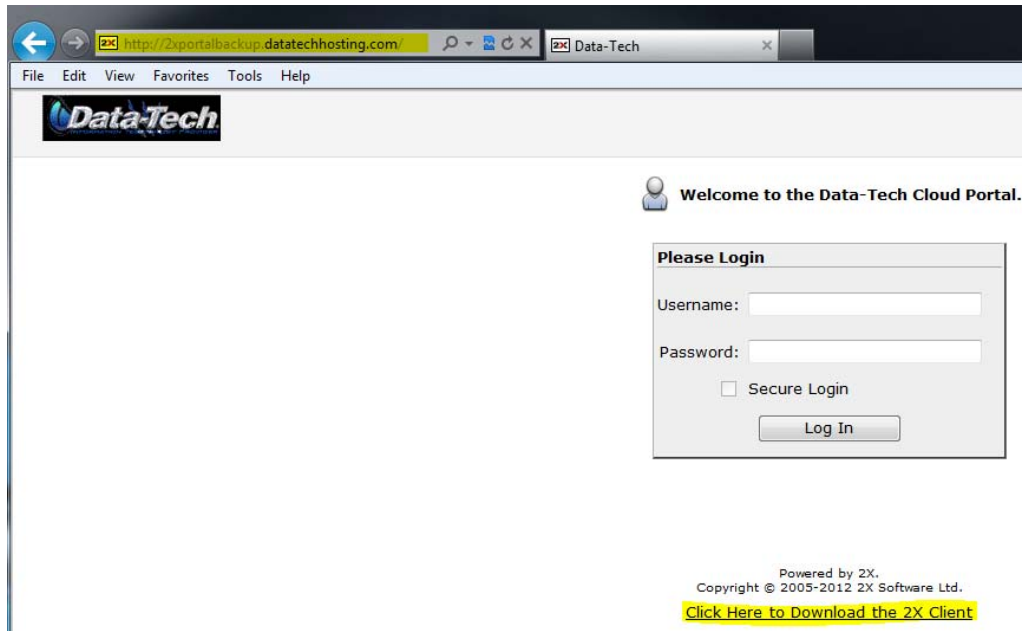
Web Access Portal

Primary URL: <http://2xportal.datatechhosting.com>

Secondary URL: <http://2xportalbackup.datatechhosting.com>



A screenshot of a web browser displaying the DataTech Cloud Portal login page. The browser's address bar shows the URL <http://2xportal.datatechhosting.com/>. The page features the DataTech logo at the top left. A welcome message reads "Welcome to the DataTech Cloud Portal." Below this is a "Please Login" form with fields for "Username:" and "Password:", a "Secure Login" checkbox, and a "Log In" button. At the bottom right, there is a footer with the text "Powered by 2X. Copyright © 2005-2012 2X Software Ltd." and a link "Click Here to Download the 2X Client".

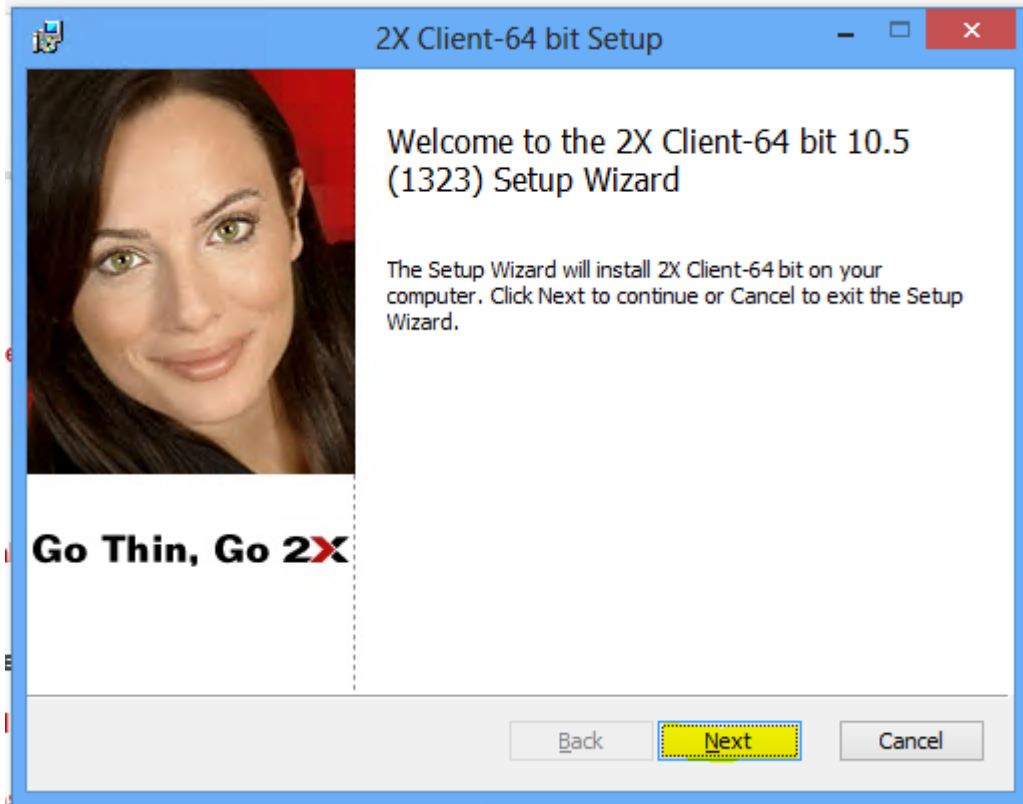


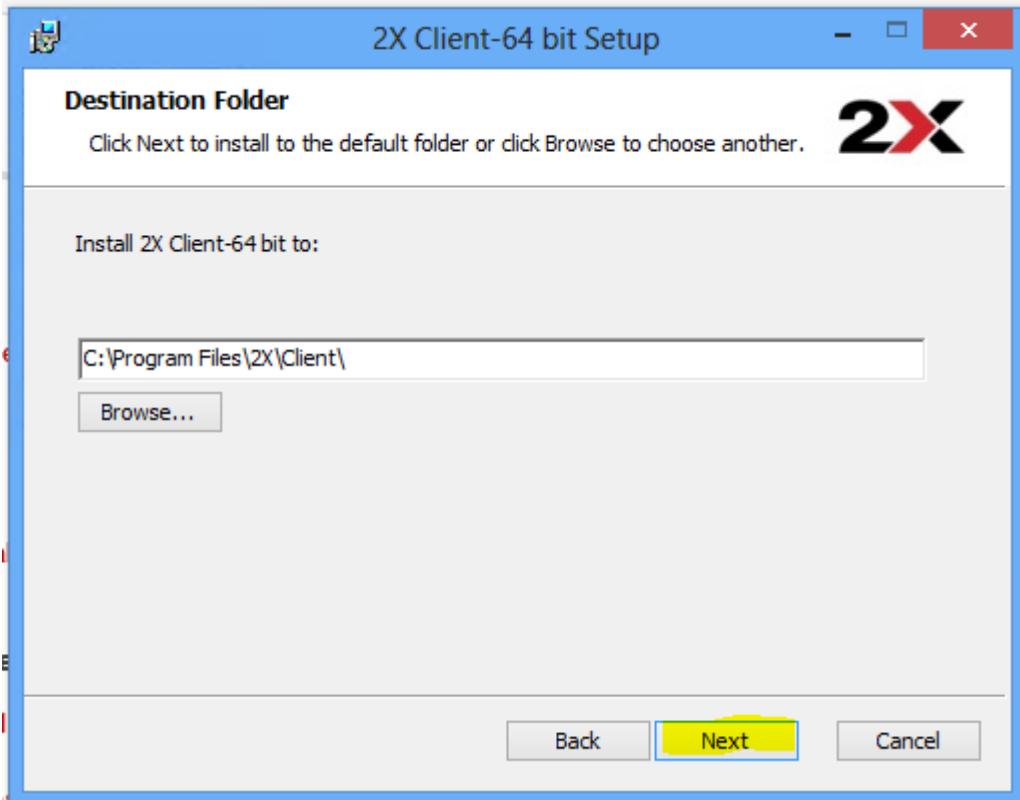
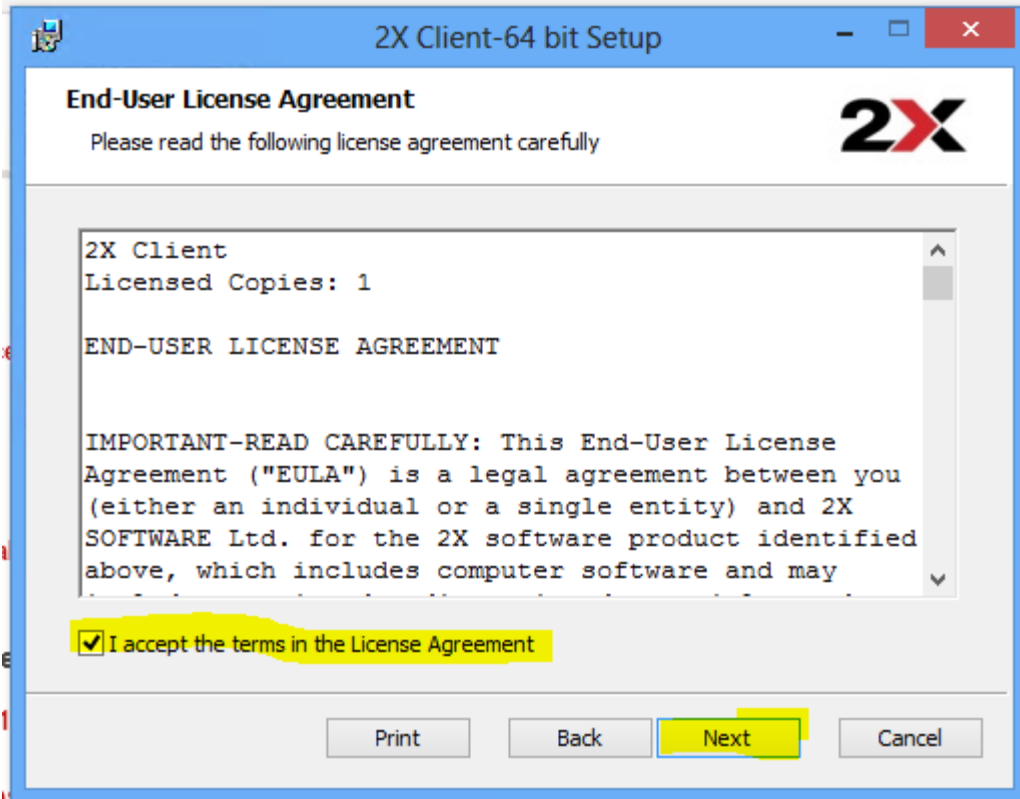
A screenshot of a web browser displaying the Data-Tech Cloud Portal login page. The browser's address bar shows the URL <http://2xportalbackup.datatechhosting.com/>. The page features the Data-Tech logo at the top left. A welcome message reads "Welcome to the Data-Tech Cloud Portal." Below this is a "Please Login" form with fields for "Username:" and "Password:", a "Secure Login" checkbox, and a "Log In" button. At the bottom right, there is a footer with the text "Powered by 2X. Copyright © 2005-2012 2X Software Ltd." and a link "Click Here to Download the 2X Client".

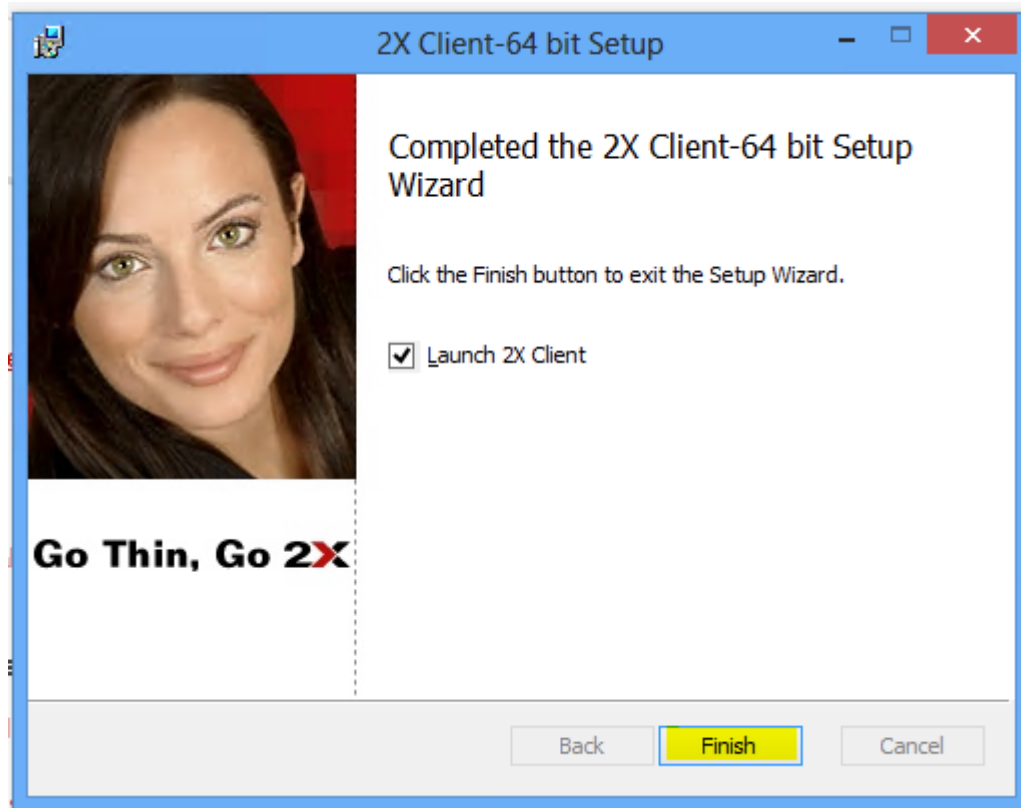
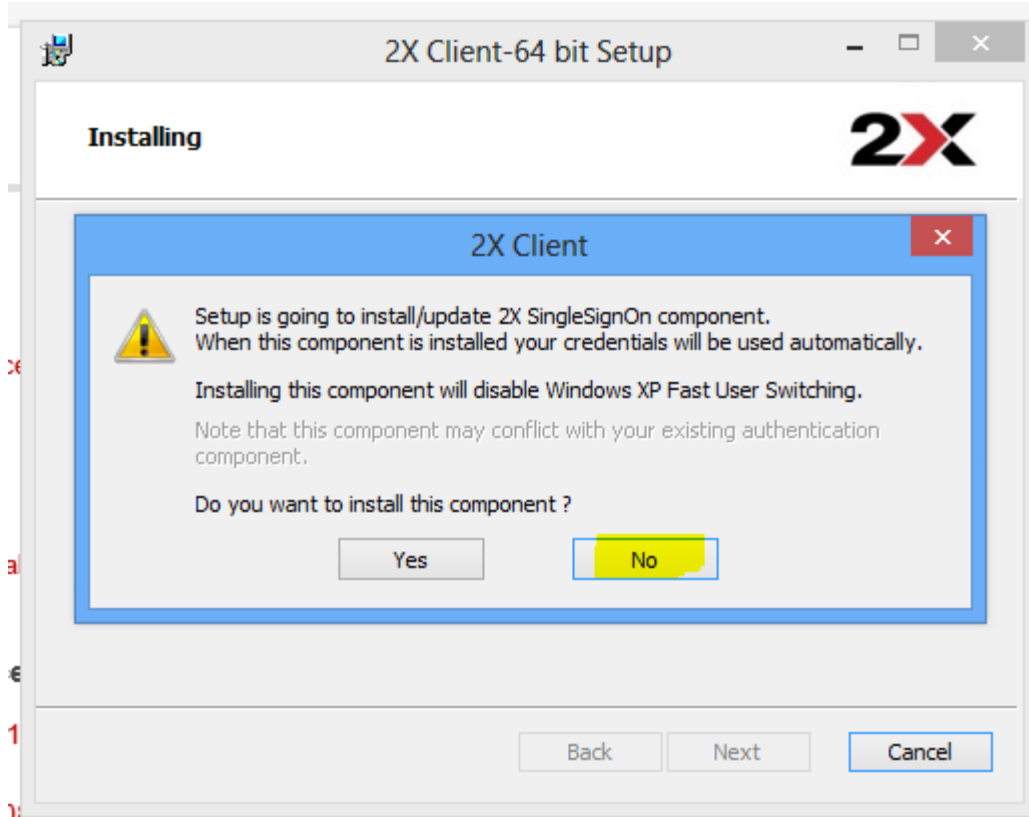
2x Client Setup

Download Client: <http://www.2x.com/rdp-client/windows-linux-mac/downloadlinks/>

1. From the above link download the client compatible with your operating system, optionally you can go to <http://2xportal.datatechhosting.com> & click the download link at the bottom this should automatically download the correct version that corresponds with your operating system.
2. Once you have download the client run the setup & follow the on screen prompts. When prompted to install the single sign on component click **NO**. See installation snapshots below.







2x Client Configuration

Primary Connection: 2xportal.datatechhosting.com

Secondary Connection: 2xportalbackup.datatechhosting.com

Connection Mode: Direct

Port: 80

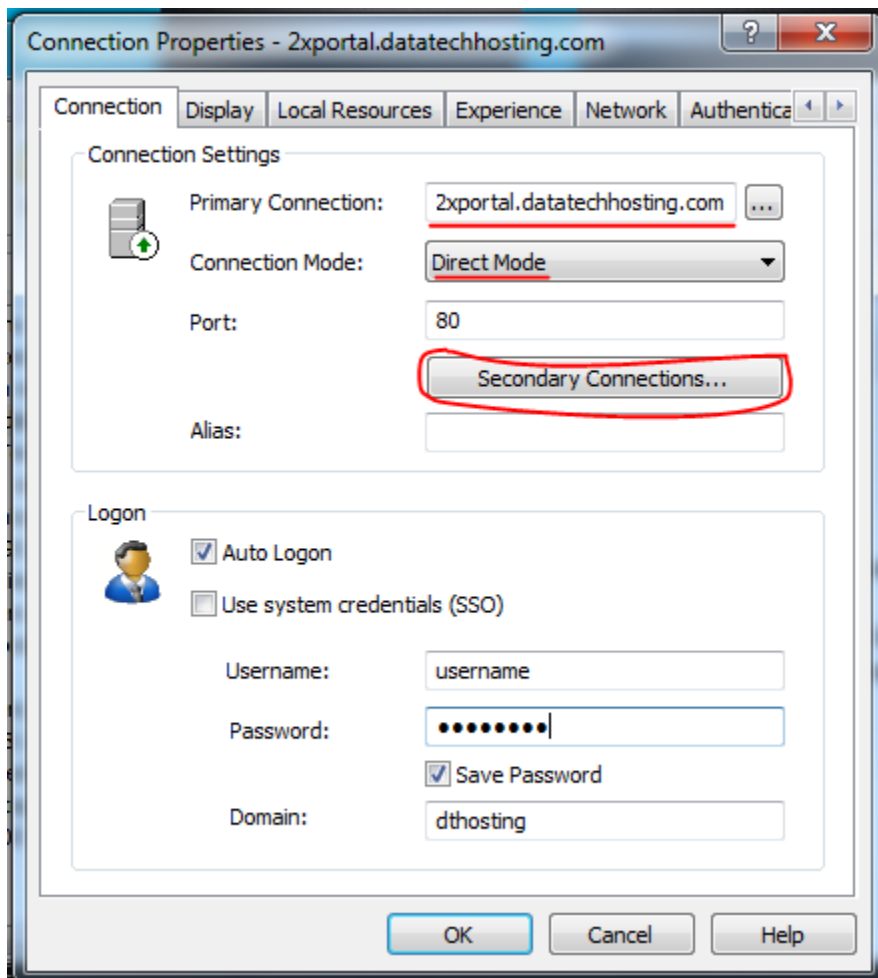
Domain: dthosting

Primary Connection Properties

Secondary Server Address: 2xportal.datatechhosting.com

Mode: Direct

Port: 80

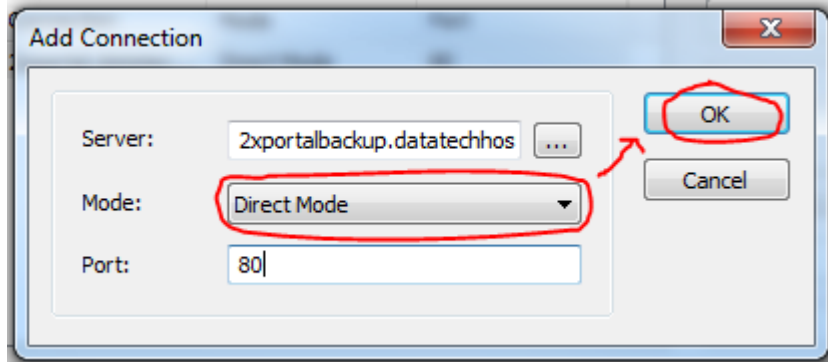
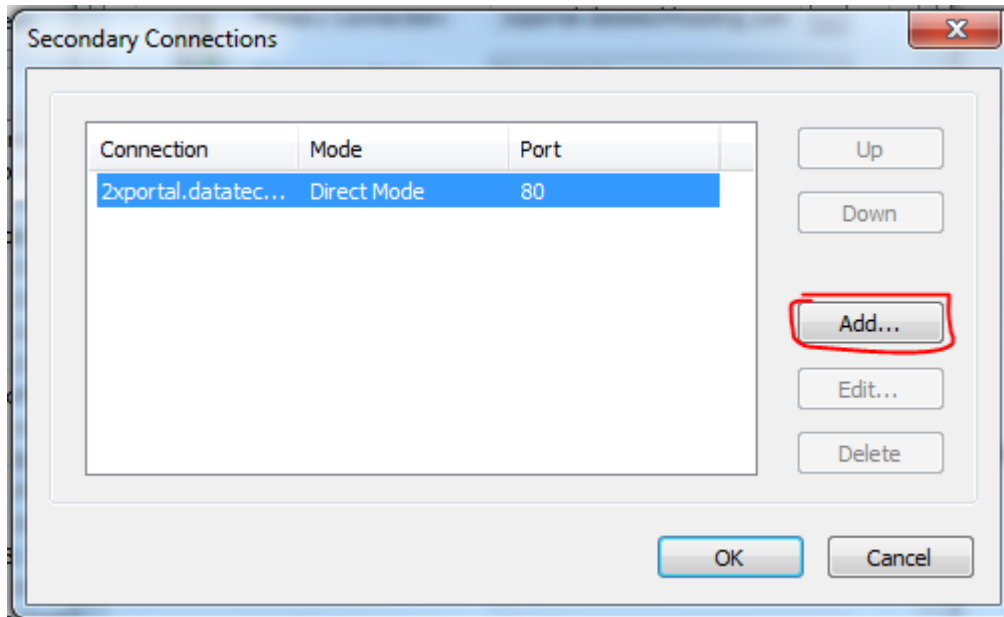


Secondary Connection Properties

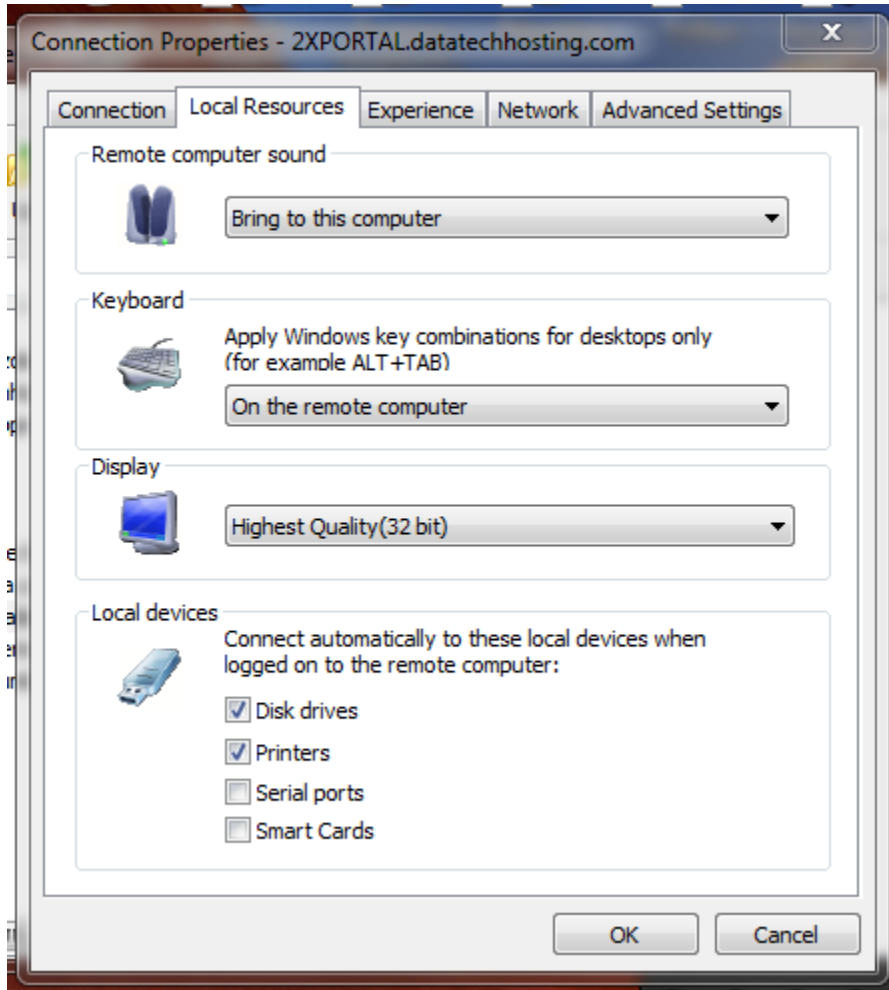
Secondary Server Address: 2xportalbackup.datatechhosting.com

Mode: Direct

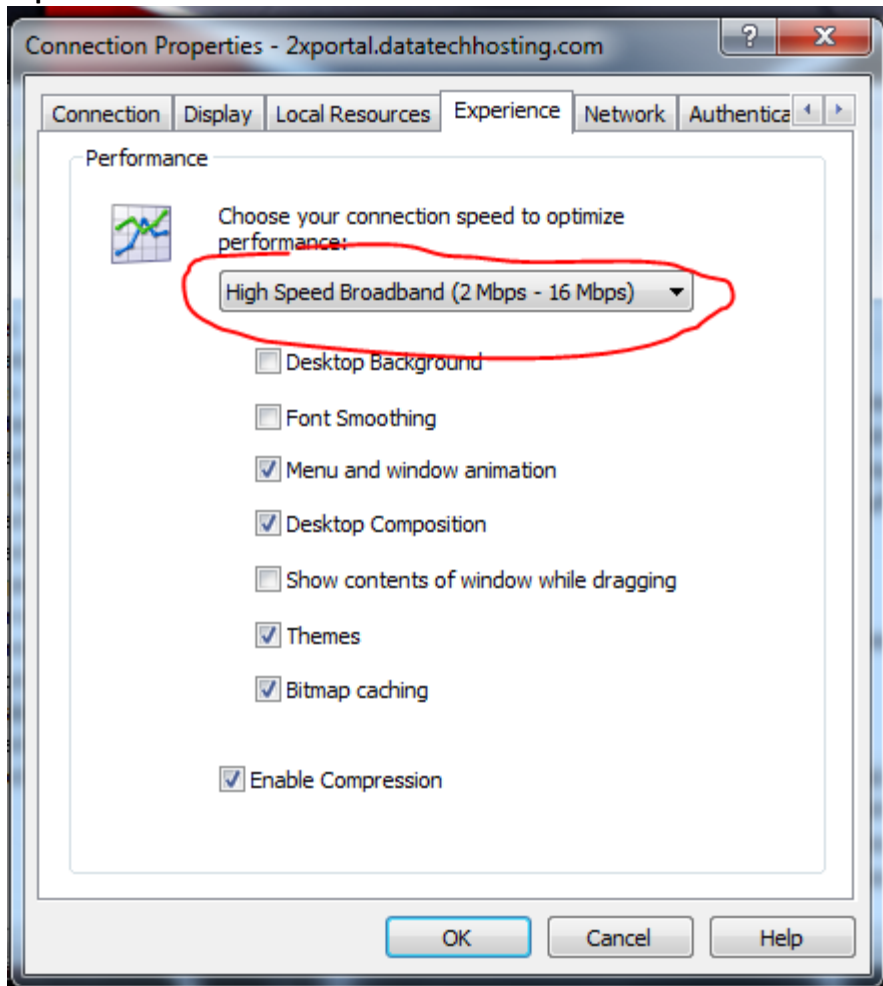
Port: 80



Local Resources:



Experience:



Advanced Settings:

